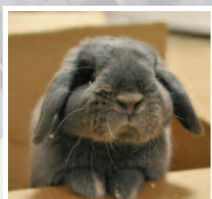


## Encouraging Wildlife

The CLEAPSS bunny wants to know...



*"will you help improve biodiversity in your school or local area?"*

This year the primary competition is bigger and better than ever! We know that primary schools do great work improving their local environment. Through the competition, we are keen to help you get outside and celebrate working with nature.

Members of CLEAPSS, Scientific and Chemical or ASE will visit all category winners to present the winning children with trophies, goodie-bags and certificates.

Winning teachers will be given complimentary entry to the 2017 ASE conference on the primary days (Friday and Saturday). During the conference, winning teachers will be presented with their school's award and invited to a celebratory lunch.

Winning schools will be presented with prizes from Scientific and Chemical.

In addition this year's overall competition winner will win a visit from Bristol ChemLabs who will run a day of demonstration assemblies and practical science workshops.

**Your project does not need to be huge or complicated to win. From bird feeder to bird sanctuary!**

**We'll consider all entries equally**

What you do, why you do it, what you learn and explaining what more you might do is more important than getting a positive result.

### You will need to tell us:

- **What** you decided to do
- **Why** you decided to do it
- **How** you planned your idea
- **How** you implemented your idea
- **How** you monitored your project
- **What** conclusions you've drawn
- **What** you've decided to do because of your conclusions

### Looking for Inspiration?

If you are unsure about what to do, useful starting points for good ideas are:

- Buglife
- Butterfly Conservation
- CLEAPSS
- OPAL
- The Royal Horticultural Society
- The Royal Society for the Protection of Birds
- The Wildlife Trust

If you have an idea but are unsure that it fits the criteria or need more advice, why not contact us:

Website: [www.cleapss.org.uk](http://www.cleapss.org.uk)

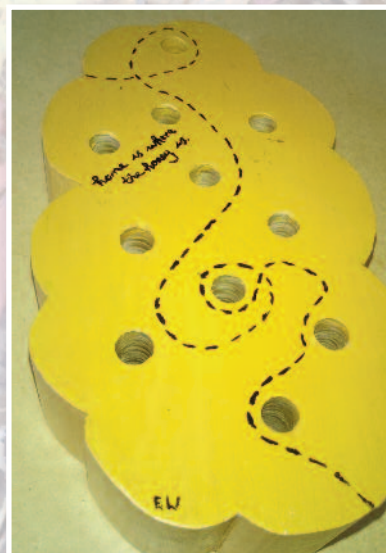
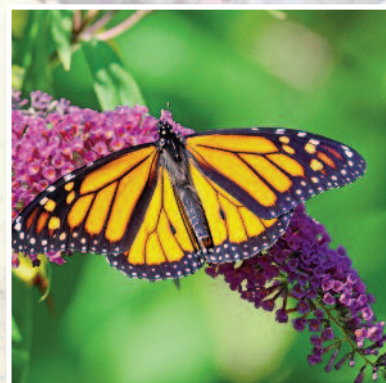
Email: [science@cleapss.org.uk](mailto:science@cleapss.org.uk)

**Helpline:** 01895 251496

CLEAPSS guide L221: *Developing and using environmental areas in school grounds* provided lots of information about setting up and using environmental areas safely.

SRA008: *Practical activities in the school grounds etc* provides a model risk assessment for working outside with nature.

PRIMARY  
SCIENCE  
AND  
TECHNOLOGY  
COMPETITION  
2016



## To enter this exciting competition you will need to:

**Research** – what lives in your local area, what wildlife would be good to encourage in to your area and why?

**Plan** – how you are going to make your chosen area in the school/local area better for wildlife and exactly what you will do to help a particular living thing to establish a home?

**Implement your plan** – construct your custom-made shelter/improve an existing area/ do whatever you intend to do to help wildlife.

**Measure your success** – over time, monitor what happens in your newly-constructed area.

**Evaluate the impact** – tell us what happened because of your actions. Where you successful? If not, why and what else could you do? Did anything unintended happen? Were they good or bad things? What did you learn from your hard work?

**Promote your work** – tell others in your community about what you have done, why you did it and what the benefits have been. Encourage and help others to also encourage wildlife.



## The report

**A summary** of the research you carried out, what you did during the research and how it influenced what you decided to do next.

**An overview** of your plan and why you think it will help wildlife both generally and in particular some specific living things.

**An explanation** of the process you undertook, including any problems you encountered and overcame. Evidence of what happened, any important data and images you collected.

**Any modifications** you undertook to the site/ construction because of the evidence you gathered including your reasons for making any changes. Any further evidence you gathered after you modified your designs/plans.

**An explanation** of what you have done to promote biodiversity to others and the impact that it had.

Credit will be gained for originality and could include scientific processes and the use of technology principles.

Wildlife is unpredictable and works at its own pace. We fully appreciate and expect that many reports will detail what has happened 'so far' and what you think and hope will happen in the future.

## Entering the competition

**There are 3 categories in the competition:**

- Year 1-2
- Year 3-4
- Year 5-6

Entries run from the year the competition starts e.g. A Y2 group that works on their entry in the spring and summer and then completes their entry with a new teacher by October of Y3 should enter the Y1-2 category.

Prizes will be awarded in all categories plus an additional overall winner will be chosen.

Please ensure you include all details on the entry form, sending one entry form for each project being undertaken.

Entry forms can be found on the CLEAPSS website:  
[www.cleapss.org.uk](http://www.cleapss.org.uk)

Entries must reach CLEAPSS by Tuesday 25<sup>th</sup> October 2016.

Please do not include video or electronic files in your entry. Entries cannot be returned.

Judging will take place on Friday 28<sup>th</sup> October 2016

 The Association  
for Science Education  
Promoting Excellence in Science Teaching and Learning

 why&  
how?  
PRIMARY SCIENCE  
TEACHING TRUST

 SC  
SciChem

REMEMBER  
CLOSING DATE  
25TH OCTOBER  
2016